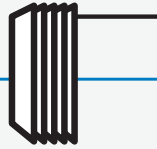


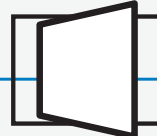
FOLDING



SLIDING



STACKING



PIVOT

EURO VISTA FIXED UNIT™

INSTALLATION GUIDE

Corporate

2200 Murphy Court • North Port, FL 34289
888.989.3876 • 941.979.5316

Showroom

1211 Stirling Road, Unit 102 • Dania Beach, FL 33004
954.610.2572

www.euro-wall.com

STEP 1

Checklist and Inspection

- ✓ 1: Verify all fixed units, mull bars and glass are the correct size, shape and color.
- ✓ 2: Inspect all components for damage prior to installation.
- ✓ 3: If there are any deficiencies or damages in parts and / or materials, contact Euro-Wall immediately at 888-989-3876.

STEP 2

Verify Opening

- ✓ 1: Measure opening and verify fixed unit will fit plumb and square in opening.
(See Diagram 1)

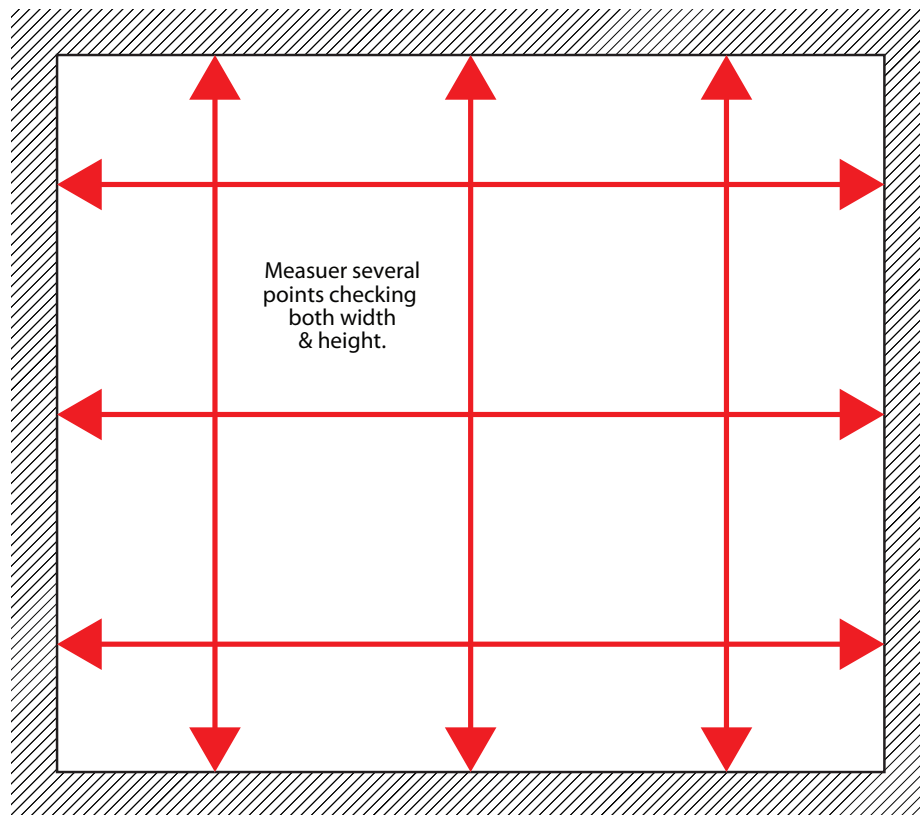


Diagram 1

STEP 3

Remove Glass

- ✓ 1: Remove snap bead and wedge gasket (see Diagram 2) from the exterior side of the fixed unit. Leave bedding gasket installed on the interior.
- ✓ 2: Remove the glass.

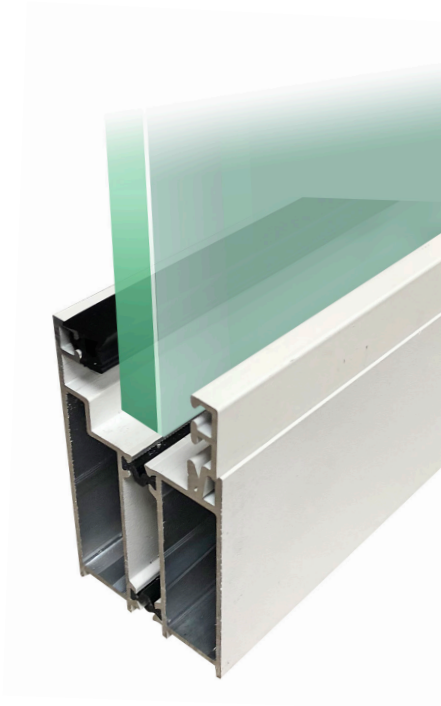
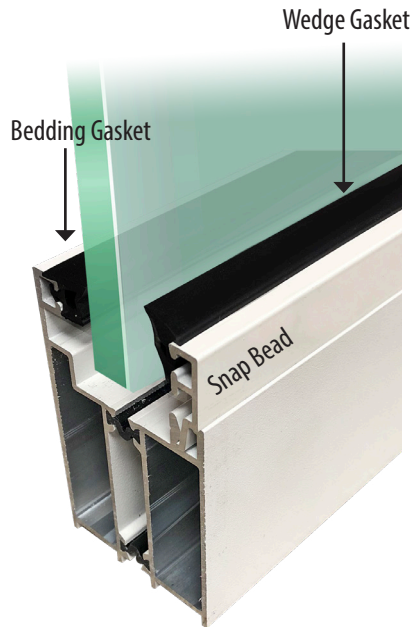


Diagram 2

STEP 4 (OPTIONAL)

A. Attaching Transom to Mull bar Without Wood Cladding

- ✓ 1: Lay out transom unit(s) and mull bars on a flat and level surface. Run a bead of silicone along both edges of the transom (see Diagram 5 on page 4).
- ✓ 2: Line up the transom in the center of your mull bar, splitting the difference equally on either side. Measure for accuracy. (see Diagram 3)

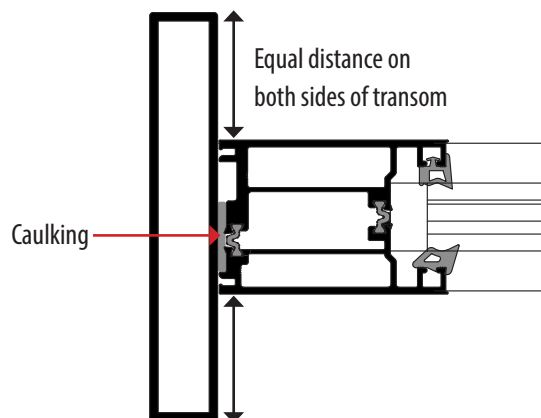


Diagram 3

B. Attaching Transom to Mull bar With Wood Cladding

- ✓ 1: Lay out transom unit(s) and mull bars on a flat and level surface. Run a bead of silicone along both edges of the transom (see Diagram 5)
- ✓ 2: Line up the mull bar with the interior edge of the transom, leaving an 1/8" of space to allow for the cladding. (see Diagram 4)
- ✓ 3: Upon completion of installation of the transom system, attach provided cladding to mull bar using Sikaflex 121.

Leave a 1/8" space for wood cladding to be applied to the mull bar which will finish flush with the transom wood cladding when applied

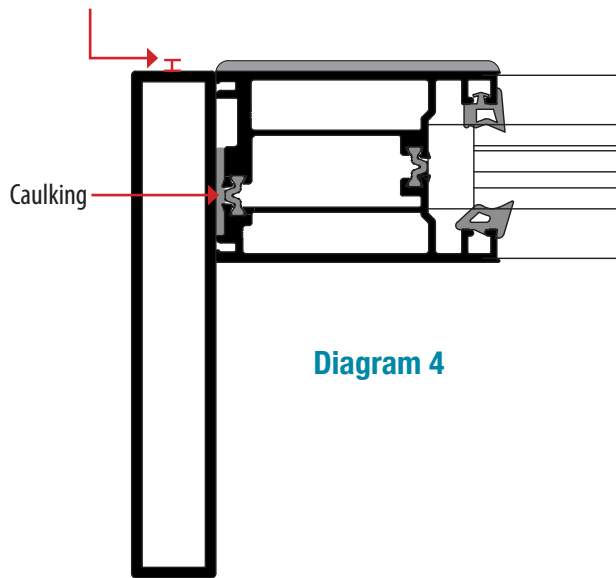


Diagram 4



Diagram 5

STEP 5

Placing Fixed Unit Into Opening

- ✓ 1: Install rubber water seal or sealant onto opening (see Diagram 6).
- ✓ 2: Place first fixed unit in opening verifying ribs on rails are embedded in sealant.



Diagram 6

STEP 6

Installing Mull Bar Clips

- ✓ 1: There will be 2 clips per mull bar provided. The clips slide into the top and bottom of the mull bar. Once the mull bar is placed in the opening, anchor the mull bar clips to the header and sill substrate for added support.

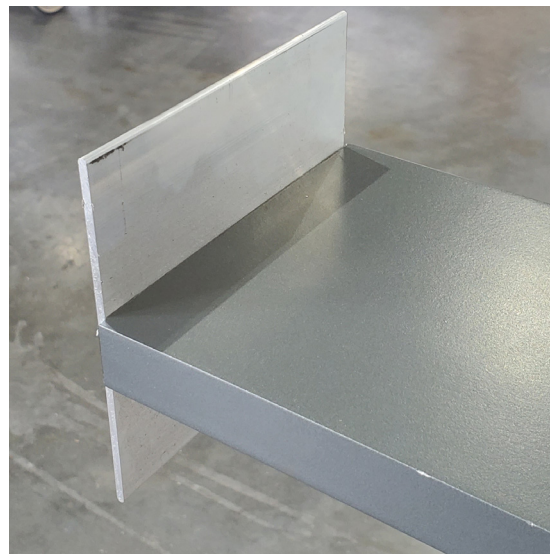
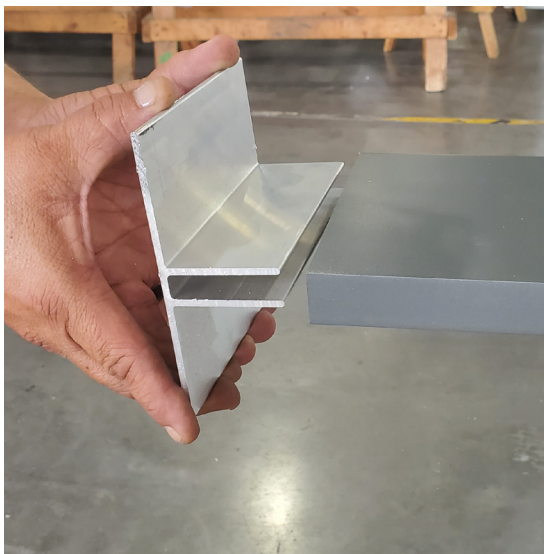


Diagram 7

STEP 7

Securing / Fastening Fixed Unit Into Opening

- ✓ 1: Install all anchor screws around fixed unit making sure to vacuum all dust from holes and dip screws in sealant (silicone or 795) before installation.
- ✓ 2: Install connecting fixed unit mull bar (if applicable). If mull bar is used, seal mull bar to sides of fixed units using sealant/rubber water seal (silicone or 795).

STEP 8

Reinstall Glass / Sealing Fixed Unit

- ✓ 1: Re-Install glass in fixed unit and proceed to install glazing rubber around the fixed unit and re-install the snap track. Make sure to cut ends of glazing rubber at 45 degree angles to create a solid seal.
- ✓ 2: Once all glazing rubber is installed, use silicone / 795 in all 4 corner of the glazing rubber to create a water seal.
- ✓ 3: After glass is installed, finish by using silicone / 795 to seal mull bar seams to the fixed units and use silicone / 795 to seal outer edge of fixed units to substrate (see Diagram 8).

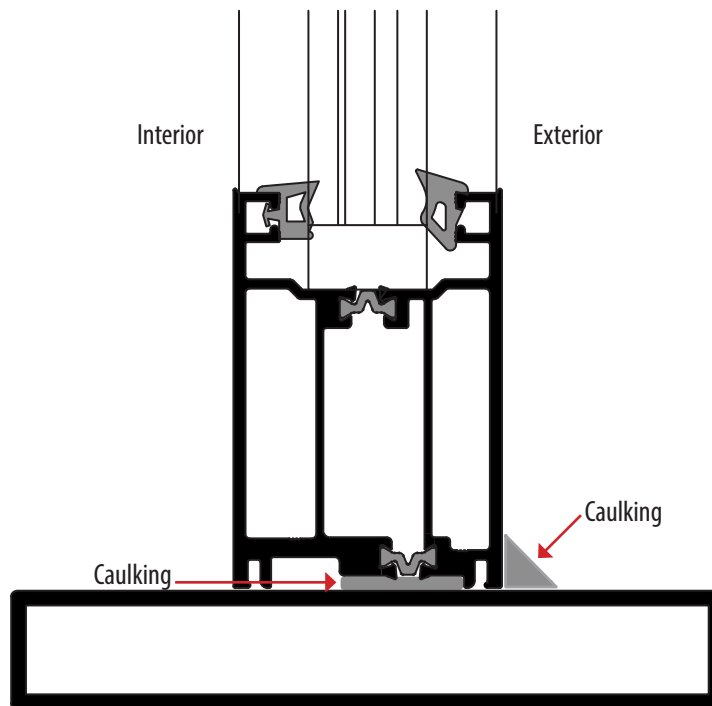


Diagram 8