



**euro-wall**<sup>®</sup>

FOLDING | SLIDING | STACKING | PIVOT

# HARDWARE CATALOG

## SOLUTIONS TEAM CONTACT INFORMATION

[solutions@euro-wall.com](mailto:solutions@euro-wall.com)  
888.989.EURO (3876)  
[www.euro-wall.com](http://www.euro-wall.com)

**ATTENTION: THIS IS NOT A FULL HARDWARE LIST,  
THESE ARE THE MOST COMMONLY REQUESTED PARTS.**



## EURO VISTA FOLD

### HARDWARE PART FINISHES



White  
(WH)



Brushed Satin  
(BS)



Clear  
Anodized  
(CL)



Gray  
(GR)



Polished  
Stainless Steel  
(PSS)



Bronze  
(BR)



Black  
(BL)



**Astragal Cap: Long**  
C00170-A



**Astragal Cap: Short**  
C00169-C



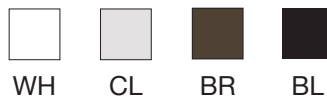
**Carrier Hinge: Lower Left**  
C0102-A\_Lwr\_Car\_LORI



**Carrier Hinge: Lower Right**  
C0103-A\_Lwr\_Car\_ROLI



**Carrier Hinge: Upper Left**  
C0067-A\_Upr\_Car\_LORI



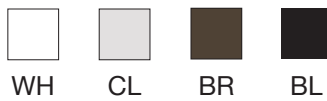
**Carrier Hinge: Upper Right**  
C0068-A\_Upr\_Car\_ROLI



**Cylinder**  
C0195-A-MP\_Cylinder\_KA  
C0196-A-MP\_Cylinder\_KD



**D Pull Handle**  
C0095-A\_D-Pull



**D Pull Handle: Single**  
C0099-A\_Clad\_Pull

\* For warranty cladded panels only





**Hole Plug (1/2")**  
C0033-A\_Hole\_Plug



**Intermediate Carrier: Lower Left**  
C0100-A\_Lwr\_Int\_Car\_LORI



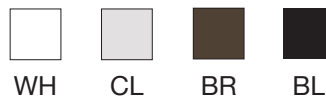
**Intermediate Carrier: Lower Right**  
C0101-A\_Lwr\_Int\_Car\_ROLI



**Intermediate Carrier: Upper Left**  
C0065-A\_Upr\_Int\_Car\_LORI



**Intermediate Carrier: Upper Right**  
C0066-A\_Upr\_Int\_Car\_ROLI



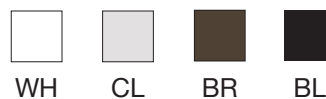
**Internal Mechanism: Transmission**  
C0111-A\_TP\_Transmission



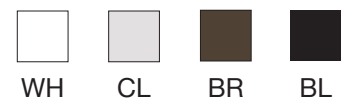
**Jamb Hinge: Lower Left**  
C0071-A\_Lwr\_JH\_LORI



**Jamb Hinge: Lower Right**  
C0072-A\_Lwr\_JH\_ROLI



**Jamb Hinge: Upper Left**  
C0069-A\_Upr\_JH\_LORI





**Jamb Hinge: Upper Right**  
[C0070-A\\_Upr\\_JH\\_ROLI](#)



**Lock Master: 3 Hook**  
[C0126-A\\_MP\\_3-Hook\\_Mech](#)



**Lock Master: 4 Hook**  
[C0127-A\\_MP\\_4-Hook\\_Mech](#)

*\* For doors over 108"*



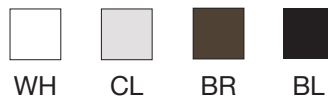
**Lock Master: Inactive (8ft) or SemiActive (6ft)**  
[DS-191E-45-304](#)  
[C0128-A\\_MP\\_Secondary\\_Mech](#)

*\* SemiActive for passive side of doors*



**Modified Hinge**  
[C0106-A\\_Modified\\_Hinge](#)

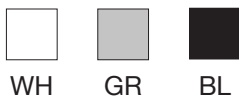
*\* For passive side of doors*



**Modified Pull Hinge**  
[C0107-A\\_Mod\\_Pull\\_Hinge](#)



**Multipoint Anti-Rattle Catch: ADA**  
[C0014-A-MP\\_ADA\\_Catch](#)



**Multipoint Anti-Rattle Catch: Header**  
[C0015-B-MP\\_Header\\_Catch](#)



**Multipoint Anti-Rattle Catch: Standard / Modified**  
[C0003-B-MP\\_STD\\_Mod\\_Catch](#)





**Multipoint Handle (Left Hand Outswing / Right Hand Inswing)**

[C0064-A\\_MP\\_LORI](#)



**Multipoint Handle (Right Hand Outswing / Left Hand Inswing)**

[C0096-A\\_MP\\_ROLI](#)



**Pivot Hinge: Left Wall Center**

[C0104-A\\_CWP\\_LORI](#)



**Pivot Hinge: Right Wall Center**

[C0105-A\\_CWP\\_ROLI](#)



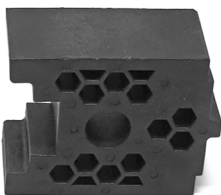
**Set Screw**

[P293](#)



**Shootbolt**

[C0075-A\\_Sht\\_Bit](#)



**Shootbolt Plastic Housing**

[C0193-A\\_TP\\_Std\\_End\\_Cap](#)



BL



**Straight Hinge**

[C0108-A\\_Straight\\_Hinge](#)



WH

CL

BR

BL



**Straight Pull Hinge**

[C0109-A\\_Str\\_Pull\\_Hinge](#)



WH

CL

BR

BL



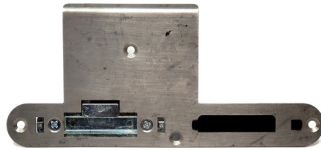
**Strike Plate**  
C0139-A\_MP\_Keeper\_Top\_Bot



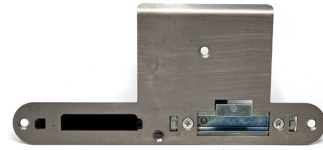
**Strike Plate**  
C0124-A\_MP\_Ast\_Strike\_LORI



**Strike Plate**  
C0125-A\_MP\_Ast\_Strike\_ROLI



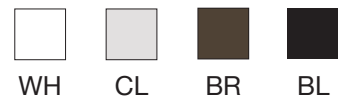
**Strike Plate**  
C0137-A\_MP\_Jmb\_Strike\_LORI



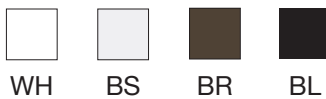
**Strike Plate**  
C0138-A\_MP\_Jmb\_Strike\_ROLI



**Sweep: 36", 48", 96"**  
C0051-A\_Sweep\_36  
C0052-A\_Sweep\_48  
C0053-A\_Sweep\_96



**Twinpoint: Long**  
C0061-A\_TP\_Long



**Twinpoint: Short**  
C0063-A\_TP\_Short



**Twinpoint: Short with Escutcheon**  
C0062-A\_TP\_Short\_Esch





**Water Management Kit**  
[C0035-A\\_WMK](#)



**Weatherstripping: Frame**  
[C0114-A\\_Frame\\_WS\\_Fold](#)



BL



**Weatherstripping:  
Large Panel**  
[C0112-A\\_Pnl\\_WS\\_BigP](#)



BL



**Weatherstripping:  
Small Panel**  
[C0113-A\\_Pnl\\_WS\\_Smallp](#)



BL





## EURO VISTA PIVOT

### HARDWARE PART FINISHES



White  
(WH)



Brushed Satin  
(BS)



Clear  
Anodized  
(CL)



Polished  
Stainless Steel  
(PSS)



Bronze  
(BR)



Black  
(BL)



**Ball Catch**  
C0074-B\_Ball\_Catch\_Kit



**Cylinder: Key Turn**  
7165SC2-26D-KD  
C0203-A-Key\_Mort\_1.125



**Cylinder: Thumb Turn**  
C0201-A-Thumb\_Mort\_1.000  
C0200-A-Thumb\_Mort\_1.125

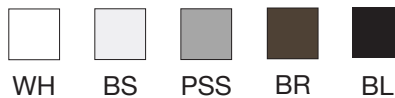


**Hole Plug (1/2")**  
C0033-A\_Hole\_Plug



**Ladder Pull**  
(12" - 96" Offset)  
C0258-A-12\_Offset\_Pull\_Non\_Ast

*\* All sizes are custom ordered*



**Pivot Cup**  
C0210-A-Mod\_CWP\_Sleeve



**Pivot Pin: Lower**  
C0209-A-Piv\_Bot\_Pin



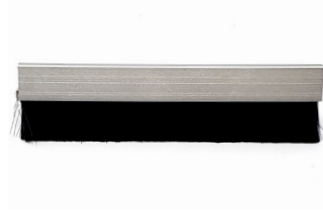
**Pivot Pin: Upper**  
C0207-A-Piv\_Hanger\_Bolt



**Set Screw**  
C0206-A-Piv\_Bolt\_Set\_Screw



**Strike Plate**  
C0204-A-Thumb\_Jamb\_Strike



**Sweep: 36", 48", 96"**  
C0051-A\_Sweep\_36  
C0052-A\_Sweep\_48  
C0053-A\_Sweep\_96



**Twinpoint: Long**  
C0061-A\_TP\_Long



**Water Management**  
C0035-A\_WMK



**Weatherstripping: Frame**  
C0114-A\_Frame\_WS\_Fold



**Weatherstripping: Large Panel**  
C0112-A\_Pnl\_WS\_BigP





# EURO VISTA MULTI SLIDE

## HARDWARE PART FINISHES



White  
(WH)



Brushed Satin  
(BS)



Gray  
(GR)



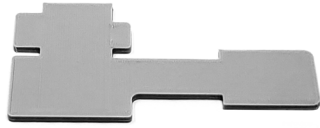
Polished  
Stainless Steel  
(PSS)



Bronze  
(BR)



Black  
(BL)



**Astragal Cap**  
C0163-H



**Bumper**  
C0042-A\_MS\_Door\_Bumpr



**Condensation Caps**  
C0032-A\_Con\_Drn\_Cap\_Pair



**Hole Plug (1/2")**  
C0033-A\_Hole\_Plug



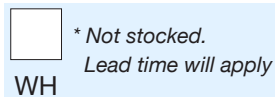
**Interlock End Cap**  
C0276-B\_MS\_Int\_End\_Plug



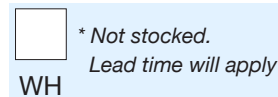
**Internal Mechanism: Anti-Slam**  
C0031-A\_Lg\_Pwl\_Catch



**Ladder Pull: 12" Offset**  
C0258-A-12\_Offset\_Pull\_Non\_Ast



**Ladder Pull: 12" Straight**  
C0257-A-12\_Straight\_Pull\_Non\_Ast



**Pawl**  
C0030-A\_Sm\_Pwl\_Catch



**Pawl Catch: Long**  
C0031-A\_Lg\_Pwl\_Catch



BL



**Pawl Catch: Short**  
C0030-A\_Sm\_Pwl\_Catch



BL

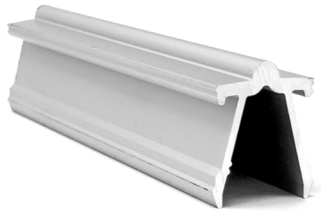


**Snap Track**  
E0074-A

*\* Used for bronze or black tracks*



BL



**Snap Track**  
E0012-A\_FinClr

*\* Used for white or clear anodized tracks*



CL



**Twinpoint: Long**  
C0061-A\_TP\_Long



WH



BS



BR



BL



**Water Management**  
C0035-A\_WMK